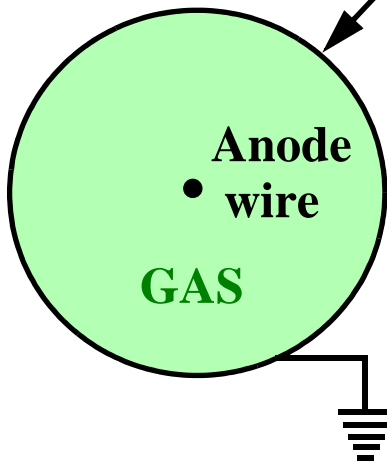


**Alumimum  
Cathode tube**

**0.4 mm**



**Anode  
wire**

**GAS**

**30 mm**

Anode wire: 50  $\mu\text{m}$  W-Re

Length: 0.85 - 6.5 m

HV: 3.1 kV

Gas: 93% Ar + 7% CO<sub>2</sub> at 3 bar

Gain:  $2 \times 10^4$

Max drift time: 710 ns

Spatial resolution: 80  $\mu\text{m}$